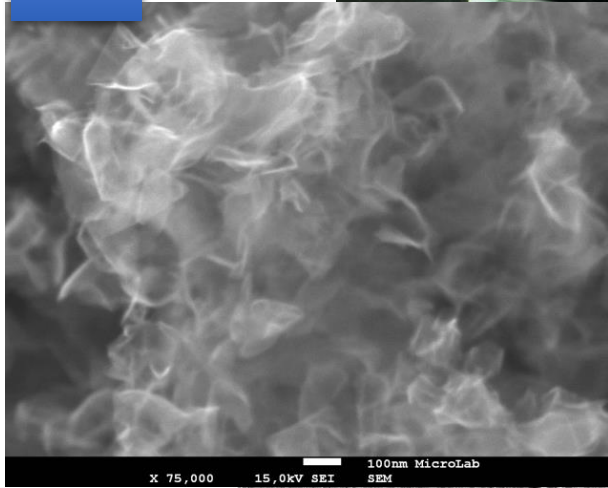
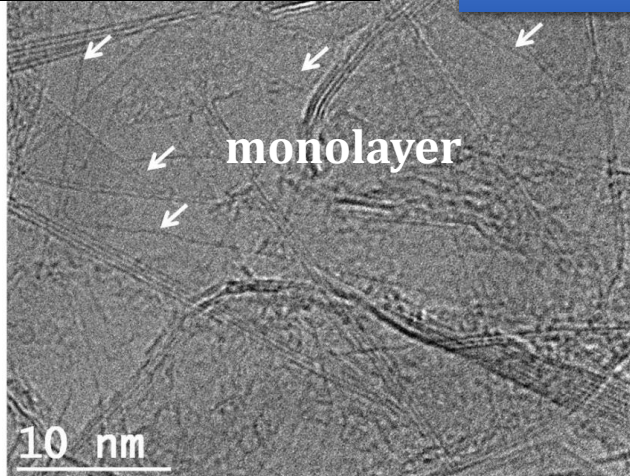


Free-standing graphene synthesized using microwave plasma method developed in PEL

SEM

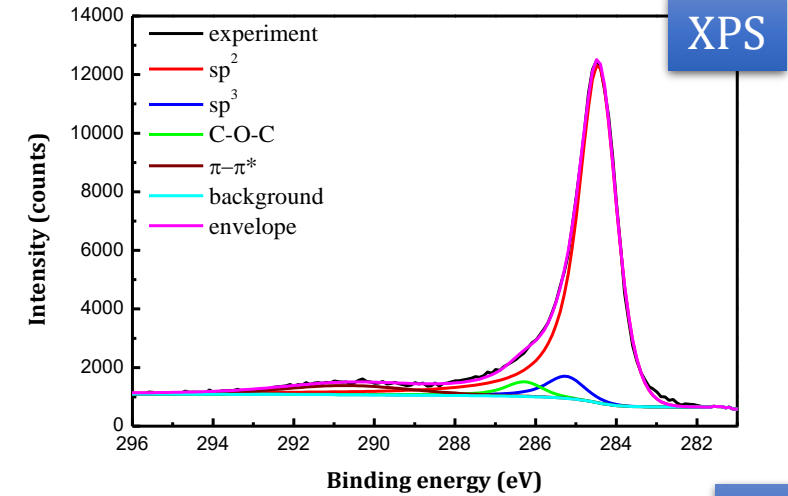


HRTEM



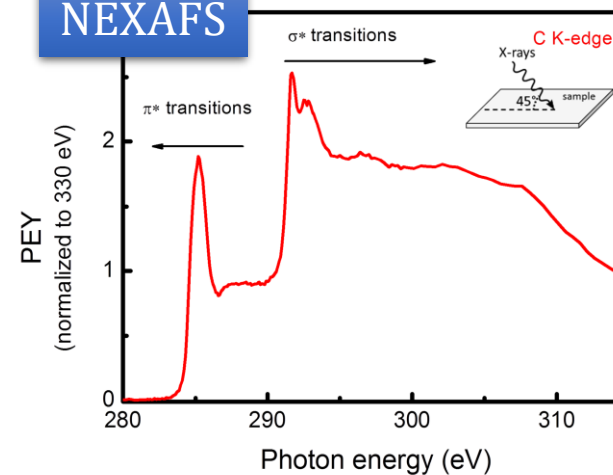
Graphene characteristics

Thickness	< 1 nm
Average size	~450 nm
Oxygen	< 1%
sp ³ carbons	< 10%
Conductivity	> 3500 S/m
Specific Surface area	> 400 m ² /gr
% of monolayer sheets	> 40 %



XPS

NEXAFS



Raman

